

# AUTUKIA VILLAGE FISHERIES MANAGEMENT PLAN



## Vision

***In 20 years' time, Autukia village will prosper through a well-managed marine resource, cleanliness of village, strong cultural values and support of children to formal education” In order to achieve this vision, the management plan contained actions to address issues and concerns concerning their fishery and beyond.***

## Contents

Authors of Autukia’s Fisheries Management Plan .....	2
<b>1. Fisheries Management Measures .....</b>	<b>3</b>
<b>1.1. Theme 1: Coastal fisheries Resources .....</b>	<b>3</b>
<b>1.1.1. Target 1: Improving the health of Fisheries .....</b>	<b>3</b>
<b>1.1.2. Target 2: Improving health of bivalve fishery .....</b>	<b>3</b>
<b>1.1.3. Target 3: Healthy marine habitats: Mangrove, seagrass and coral reefs .....</b>	<b>3</b>
<b>1.2. Theme 2: Cleanliness of Autukia village .....</b>	<b>4</b>
<b>1.2.1. Target: Maintain cleanliness of Autukia village and its coastal areas .....</b>	<b>4</b>
<b>1.3. Theme 3: Cultural rules and Traditional Practices of Autukia Village .....</b>	<b>4</b>
<b>1.3.1. Target: Preservation of Autukia’s traditional practices and Enforcement of Rules .....</b>	<b>4</b>
<b>1.4. Theme 4: Education .....</b>	<b>4</b>
<b>1.4.1. Target: Support all children of Autukia to education .....</b>	<b>4</b>
<b>2. Management Plan Instructions .....</b>	<b>5</b>
<b>2.1. Implementation .....</b>	<b>5</b>
<b>2.2. Monitoring .....</b>	<b>5</b>
<b>2.3. Evaluation .....</b>	<b>5</b>
<b>2.4. Surveillance and Enforcement .....</b>	<b>5</b>
<b>3. Maps .....</b>	<b>6</b>
<b>3.1. Area which Autukia’s Management Plan will be effective at .....</b>	<b>6</b>

## Authors of Autukia's Fisheries Management Plan

Creation of Autukia's management plan started off on the 7<sup>th</sup> December 2017 by Autukia's villagers themselves

Villagers who created the Autukia Village Fisheries Management Plan

<b>Oldmen</b>	<b>Men</b>	<b>Women</b>	<b>Youth</b>
Tiikai. Tawaia Betero. Taom Tokarerei. Ioane Mokate. Katarake Teakapua. Kiteon	Mareko. Tibiriano Raibwebwe. Arikatao Otea. Tiaon Rabaere. Kabiriera Teuea. Beretia Eria Tekatabu Tirouen. Iuta Teaua. Tebaou Bauro. Tooma	Temaia. Tiikai Katuurerei. Touea Etite. Raibwebwe Tebwe. Taom Mireka. Bauro Taabotu. Eria Baikite. Ribaro Temannube. Iabeta Barereua. Otea Tengaeua. Tirouea Rosary. Tokarerei Teenang. Mokate Tenimwea. Maroko Kiritiana. Rabaere	Toani. Tamaroa Kautabea. Bungea Umea. Tiaon Tiotiene. Nariki Itii. Mokate Beia. Taie Roti. Betero Itimari. Betero

The creation of Autukia's Fisheries Management Plan was assisted by the Ministry of Fisheries & Marine Resources Development through funding from UNDP's Least Developed Countries Fund (LDCF) project from the Ministry of Environment, Lands, Agriculture Development

Fisheries Officers who have contributed to the development of Autukia's Fisheries Management Plan

Tarateiti Uriam Bwebwenikai Rabwere Iaira Mauerere Matereti Buren Tekanimaiu Tebwerea	Rooti Tioti Kobaia Teitiaki Takaatu Nantei Iutitak Karekenteatu
---	--

# 1. Fisheries Management Measures

## 1.1. Theme 1: Coastal fisheries Resources

### 1.1.1. Target 1: Improving the health of Fisheries

#### Actions:

- a. Ban fishing during the spawning aggregation
- b. Need to control mesh size of gill nets for different species:
  - Bonefish gillnet at least 3-inch mesh
  - Ban catch of juvenile mullets with gill nets.
- c. Close fishing in a small area within the lagoon that is commonly a breeding site for many species
- d. Ban catch of berried coconut crabs, lobsters and crabs
- e. harvesting crabs (*manai*) during their spawning season (full moon) is banned in areas marked in a Map shown below.
- f. Ban ororo fishing or water splashing fishing in Autukia
- g. Ban cutting of mangroves
- h. Ban small mesh gill nets
- i. Prohibit dumping rubbish into the sea to minimize impact on marine habitats

### 1.1.2. Target 2: Improving health of bivalve fishery

#### Actions:

- a. Harvesting bivalves on mudflats that starts from *Te Keke* to the northern end of the Kiribati Uniting Church seawall is banned for 2 years (refer to the 2<sup>nd</sup> Map bellow)
- b. Revolve bivalve fishery over *Nei Mateatea* mudflat every two years (refer to the 2<sup>nd</sup> Map bellow)
- c. Close gleaning of bivalve in a designated area for year
- d. No dumping of rubbish of any kind in the sea
- e. Fine will imposed on any individual polluting the sea
- f. Ban gleaning during the spawning season of these bivalves. Spawning season would be confirmed by Fisheries Assistant when known.
- g. Gleaning should be controlled and planned well to ensure the sustainability of these species

### 1.1.3. Target 3: Healthy marine habitats: Mangrove, seagrass and coral reefs

#### Actions:

- a. Mangrove replantation and banning of coral reef destruction for limestone powder and any other destructive practices.
- b. Protection of mangroves, coral reefs, and seagrass. Ban all destructive practices to these habitats. Fines will be imposed once this rule is fully enforced.
- c. Ban the use of spoon to catch ark shell among seagrass. Fines will be imposed
- d. Ban cutting of mangroves for any purpose.
- e. Mangrove and coral reef planting should be promoted and village to be trained to do this kind of activity. Need proper training from the Ministry of Fisheries.

## 1.2. Theme 2: Cleanliness of Autukia village

### 1.2.1. Target: Maintain cleanliness of Autukia village and its coastal areas

#### Actions:

- a. Defecation on the beach is banned. Fines will be imposed for any individual found guilty
- b. On -going monitoring of all households in maintain a clean home
- c. A proper disposal area for rubbish is needed to be established in order to maintain a healthy marine ecosystem
- d. Encourage all village members to promote cleaning as well as planting important trees and plants.
- e. All households must have toilets
- f. Each household must have a pit to keep their own rubbish inside

## 1.3. Theme 3: Cultural rules and Traditional Practices of Autukia Village

### 1.3.1. Target: Preservation of Autukia's traditional practices and Enforcement of Rules

#### Actions:

- a. Our management plan should be implemented and supported first from our village which means all Autukia village members should abide by the rules set out in the management plan
- b. Autukia Councillor is tasked to publicize the management plan to all councillors of other villages on Nonouti to seek their support and collaboration
- c. Autukia elder representative is also tasked to work in collaboration with his Elders association
- d. Women of Autukia must also work collaboratively with Nonouti women association to support the management plan
- e. Maintain the celebration of important days to ensure traditional practices are maintained through generations
- f. Ensure there is ongoing announcement of the management rules younger generations are well aware
- g. Set up a fisheries management committee within the village to ensure ongoing commitment

## 1.4. Theme 4: Education

### 1.4.1. Target: Support all children of Autukia to education

#### Actions:

- a. Parents or guardians who allow their child/children to gather coconuts during school hours will be penalized
- b. Parents or guardians who let their child or children stay up late during the week will also be penalized
- c. No child under 18 should be allowed to consume alcohol, smoke or grog and chew
- d. A committee should be established that will steer the support to all children towards education.
- e. Encourage children to study at night
- f. Encourage children between the age of 3 to 5 to pre-school

## 2. Management Plan Instructions

### 2.1. Implementation

- 2.1.1.** The management plan is to be effective from 1<sup>st</sup> July 2020 until 1<sup>st</sup> July 2023
- 2.1.2.** Nei Tengarengare Committee will lead the implementation of the Fisheries Management Plan

### 2.2. Monitoring

- 2.2.1.** The management plan will be monitored by Nei Tengarengare Committee
- 2.2.2.** Members of Nei Tengarengare Committee are to be Nominated from the Village during every village meetings
- 2.2.3.** Nei Tengarengare Committee will produce and present a monitoring report to the whole village to revise in every during village meetings

### 2.3. Evaluation

- 2.3.1.** The management plan will be reviewed every year
- 2.3.2.** The whole village of Autukia will do the review of the management plan with supervision assistance provided by appointed officers from the Ministry of Fisheries and Marine Resources Development
- 2.3.3.** The review will focus on the new changes and further addition from the village's perspective.

### 2.4. Surveillance and Enforcement

- 2.4.1.** The fisheries assistant, police officers and the village warden are responsible for the enforcement of the villages management plan.
- 2.4.2.** It is a responsibility of every villager in Autukia village to report any noticeable breaches to Autukia's Fisheries management plan to Enforcers as stated in 2.4.1.



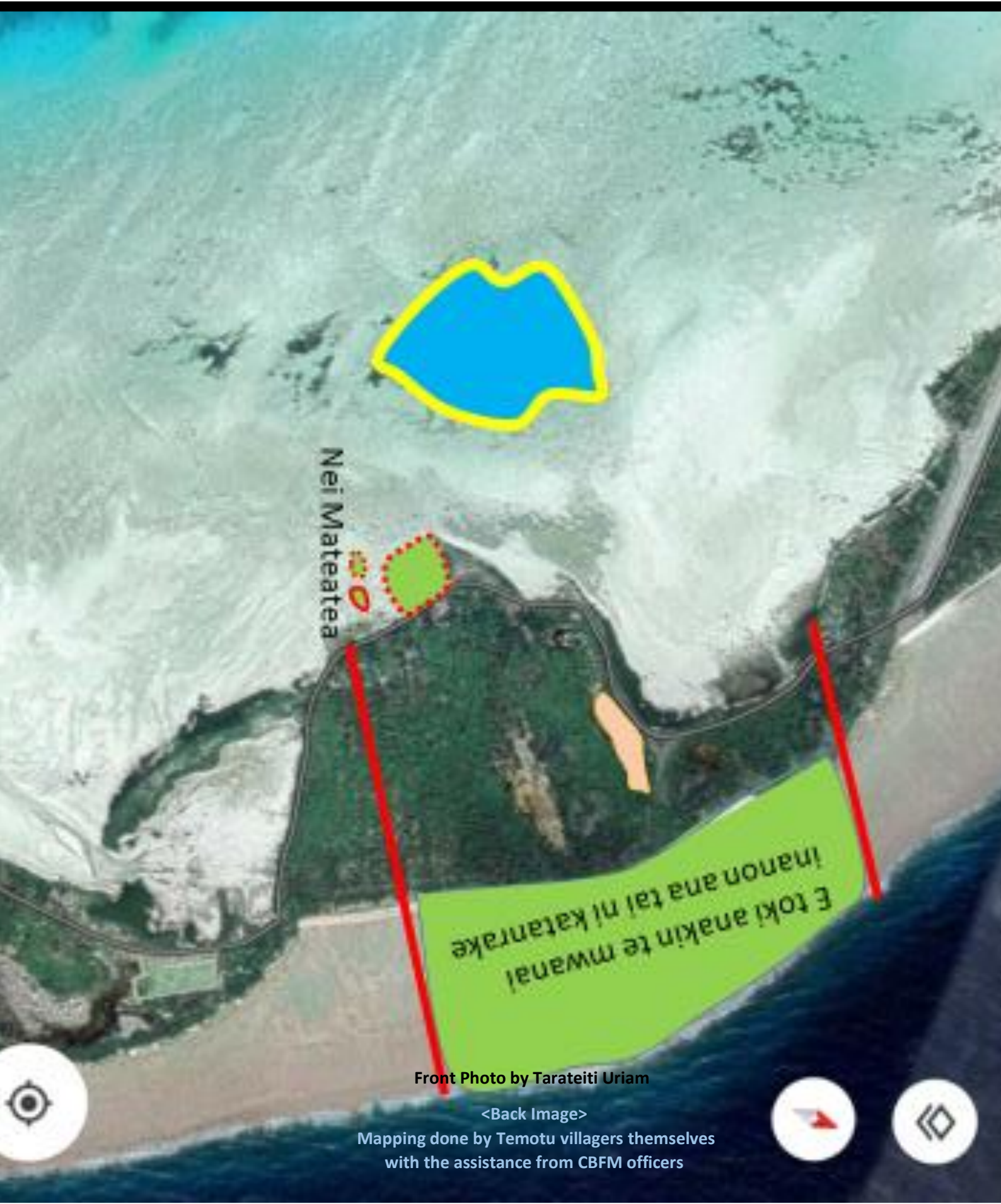
### 3. Maps

#### 3.1. Area which Autukia's Management Plan will be effective at





Empowered lives.  
Resilient nations.



Front Photo by Tarateiti Uriam

<Back Image>

Mapping done by Temotu villagers themselves  
with the assistance from CBFM officers