



**Ministry of Environment,
Lands and Agricultural
Development
Bikenibeu, Tarawa
Republic of Kiribati**



SAY NO TO PLASTICS
*They are threatening
our marine life*



PRESS RELEASE

Nourishing marine resources at Maiana and Nonouti islands

Three teams from Fisheries left Tarawa to Maiana and Nonouti for a two weeks from February til March for conducting activities in monitoring of ark shells, giant clam wild brood stock aggregation, the restock of seaweed farming, and creel survey.

One team at Maiana coordinated seaweed farming and restocking of ark shells and giant clams, which are similar with Nonouti team activities, while the other team focused on creel survey in assessing fishing activities only on Maiana.

Seaweed farming was revived to support post-harvest not only for consumption, but for alternative income generating. “Seaweed farming for food is new to us and we are looking forward to see its fruit as we join hands with Fisheries,” a village councillor Mr Taberauea Baikia stated. The brook stock of giant clams aggregation would increase both the number of giant clams` eggs to be fertilized and contribute to the next generation. Thus, these clams should be placed in Marine Protected Areas for safety from any obstructions. Bobai Tebania, a Senior Fisheries Assistant quoted, “the translocation of ark shells last year (2020) had been successful at Autukia`s Marine Protected Area with a 80% survival rate, while seaweed monitoring at Rotimwa and Temwanoku villages were managed by selected families to address management issues by these villages”.

The creel survey assessed fishing catches at coastal areas relatively to enhance management implementations for long term solution on fish exploitation. *Tebwii Tererei, a Fisheries Technician* said that there is an increase in fishermen catch especially bonefish on Maiana Island as well as other fish including queen fish and trevally compared with previous years. *Mr Arebonto Teningu, a Fisherman from Tekaranga Maiana* quoted, “An increase in quantity of finfish especially bonefish can now be seen in Maiana lagoon and bonefish can now be caught closer to the Island”. The team also managed to train Fisheries Assistant and Fisheries Extension Assistant on new creel survey software called IKASAVEA, a new database from South Pacific Commission.

The trips were funded by the project ‘Enhancing Food Security in the Context of Global Climate Change’, known locally as the ‘LDCF project’, which is financially supported by the Global Environment Facility- Least Developed Countries Fund through the United Nations Development Programme, and executed through the Environment and Conservation Division under the Ministry of Environment, Lands and Agriculture Development.

For more information, contact: Bwebwetake Natua (Ms) and Riannaba Riwata (Mr)

Ministry of Fisheries and Marine Resources Development abarutika@gmail.com

For more Project activities, follow [@KiribatiLDCF](https://twitter.com/KiribatiLDCF) on Twitter, [@ldcffoodsecurity](https://www.instagram.com/ldcffoodsecurity) on Instagram, and [@kiribati-ldcf-food-security-project](https://www.linkedin.com/company/kiribati-ldcf-food-security-project) on LinkedIn



Ministry of Environment,
Lands and Agricultural
Development
Bikenibeu, Tarawa
Republic of Kiribati



SAY NO TO PLASTICS
*They are threatening
our marine life*



Kamauan Marin Taari iaon Maiana ma Nonouti

A kairaki teniua ana tiim te Tabo n Akawa are i Tanaea imin kaeon Maiana ma Nonouti inanon te man ae uoua te wiiki inanon Beberuare nakon Maati ibukin tuoan tanan ma kamwaitan buun, norakin neitoro, unikakin tiwiita, ao ai te kakae iaon kokona.

Teuana te tiim iaon Maiana e karaoa te ununiki iaon tiwiita ma kamwaitakia neitoro are e bon karaoia naba te tiim are nako Nonouti. Te kauoua n tiim are e mena naba iaon Maiana e karaoa te tutuo iaon te kokona irouia taan akawa.

“Te ununiki ibukin tiwita ibukin te Tania ni Maiu e rangi ni boou nakoira ao ti rangi n kukurei n nora aron rikirakena man te ikarekebai are e na karaoaki ma kain te Tabo n Akawa, (Taberauea Baikia, village councillor). E reitia n taekinna Bobai Tebania (te tia mwakuri man te Tabo n Akawa)bwa buun ake a kamauaki iaon te abamwakoro n te ririki ae nako (2020) a rangi n maiuraoi bwa 80% maiuia iaon Autukia. Iaon Rotimwa ma Temwanoku ao iai te kantaninga bwa maiunraoin tiwiita a tararuaki irouia utu ake a tia n katabeaki iai ao ai bon anga tabeua aika kakaokoro imin noran kanganga aika a mwaiti.

Te tutuo iaon te kokona iaon noran karikirakean anga ibukin kateimatoan maitin marin taari. E taekinna Tebwii Tererei man te tabo n Akawa bwa iai te rikirake n mwaitin konaia taan akawa riki te ikari iaon te abamwakoro ae Maiana ma tabeua iika n kabotauaki ma ririki aika a nako. E reitia n taku Arebonto Teningu, temanna te tia akawa mai Tekaranga, Maiana bwa iai te rikirake n mwaitin ika ake a kona n noraki n te nama ao n kona n reke irarikin te aba. E bon reke naba aia tai kain te tiim n mwakuri ma te Fisheries Assistant ao te Fisheries Extension Assistant iaon kabonganana aia bwai n mwakuri iaon te kokona ae te IKASAVEA ibukin aia kakae are e kakabonganaki irouia kain te South Pacific Commission.

E mwanenaki te karikirakea aio man te karikirake ae te Tania ni Maiu are e a boutokaki man te Global Environment Facility-Least Developed Countries Fund ao te United Nation Development Programme are e a kairaki karaoana man te Botaki n Mwakuri Ibukin te Enwarometa, Aaba, ao Karikirakean te Ununiki n mwangana are te Otawanin.

*For more information, contact: **Bwebwetake Natua (Ms) and Riannaba Riwata (Mr)***

Ministry of Fisheries and Marine Resources Development
abarutika@gmail.com

For more Project activities, follow [@KiribatiLDCF](#) on Twitter, [@ldcfoodsecurity](#) on Instagram, and [@kiribati-ldcf-food-security-project](#) on LinkedIn

Maiana (first team)



Scaling and weighing



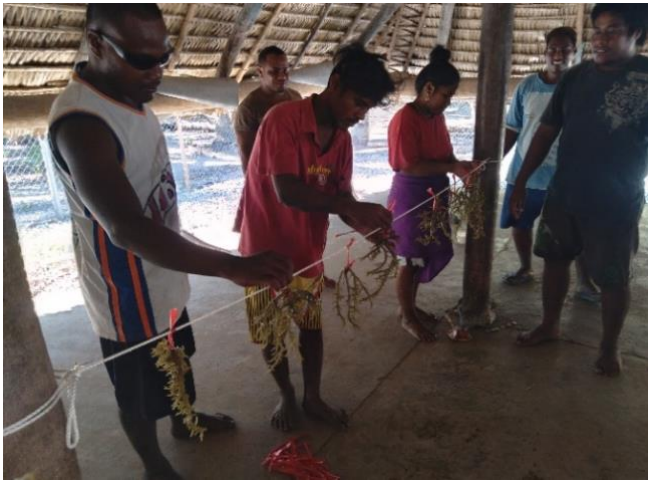
interviewing and measuring his catches



Interviewing a fisherman and teaching FA the use of a tablet



Maiana.. Second team



Preparation of seaweed seedlings before deployment in Tebiauea lagoon



Consultation at the second village, Tebiauea for seaweed farming



Collection and aggregation of h.hippopus broodstocks in Maiana lagoon to stimulate natural spawning.



Seaweed monitoring in Tebiauea village with one of the volunteers, Mr. Ueanteiti



Interview with one of the old women in Tematantongo village regarding ark shell site survey.

Nonouti team



Discussion meeting with villagers at Temwanoku maneaba for gathering essential information on seaweed farming (issues encountered, way forwards, and further views to improve the project. The 5 villagers presented are been selected to be new seaweed farmers for the start and one of them is a council rep from this village (a man standing).



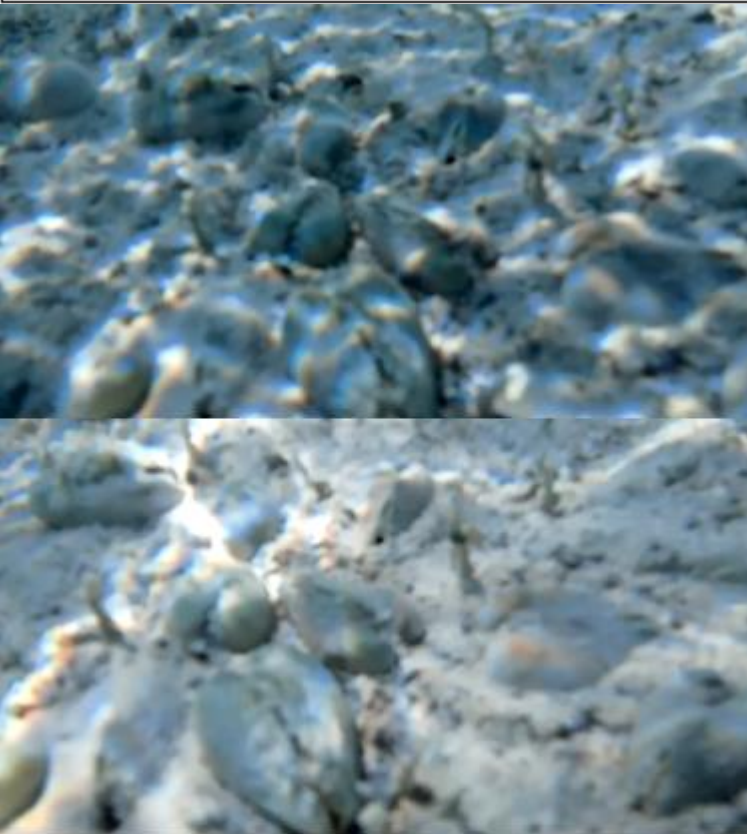
Discussion meeting with Rotimwa seaweed farmers regarding issues encountered during monitoring, way forwards and further views to improve the project. Farmers are so supportive and grateful to the project as they know and value its contribution to food alternatives and income generation.



Observing and cleaning ark shell cages at Autukia MPA with FA Matuu and team member Riannaba. Over 90% ark shells survived.



Monitoring and cleaning of ark shell cages at Aon-Koaua reef-flat with team members Totarati Kirario and Riannaba Riwate. Over 80 % ark shells survived both in cages and with no cage protection.



During ark shell monitoring at Autukia MPA, screenshot by captured underwater video camera. Ark shells in cages are grouped into more than ten in a looking healthy status.