

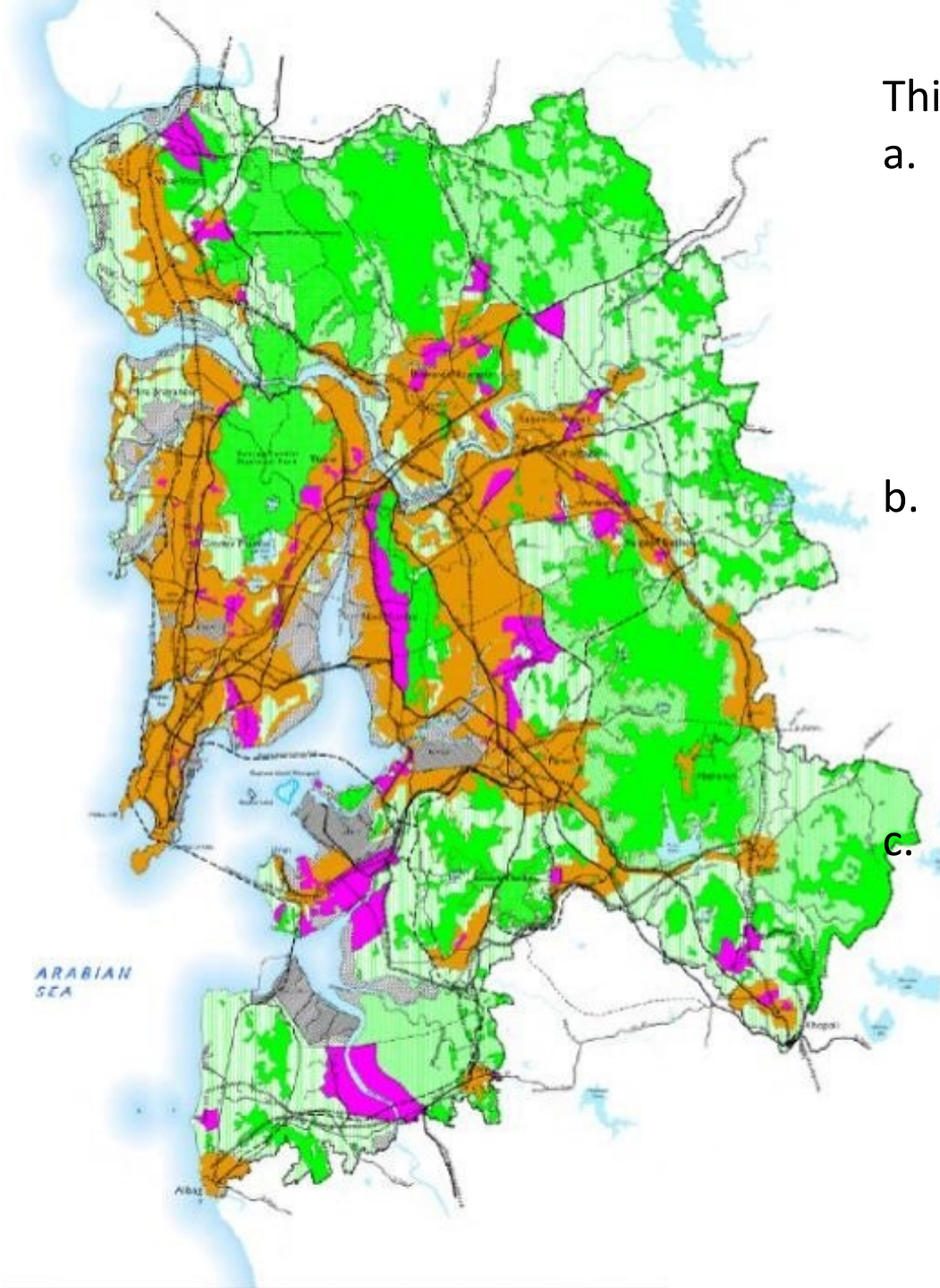
Land Use Map of MMRDA Region 2016

32 % of MMR is urbanized and the remaining falls under forests, mangrove fields, salt pans and fish farms, lakes and river systems etc.

This area has numerous inland waterbodies with vulnerable communities.

Legend

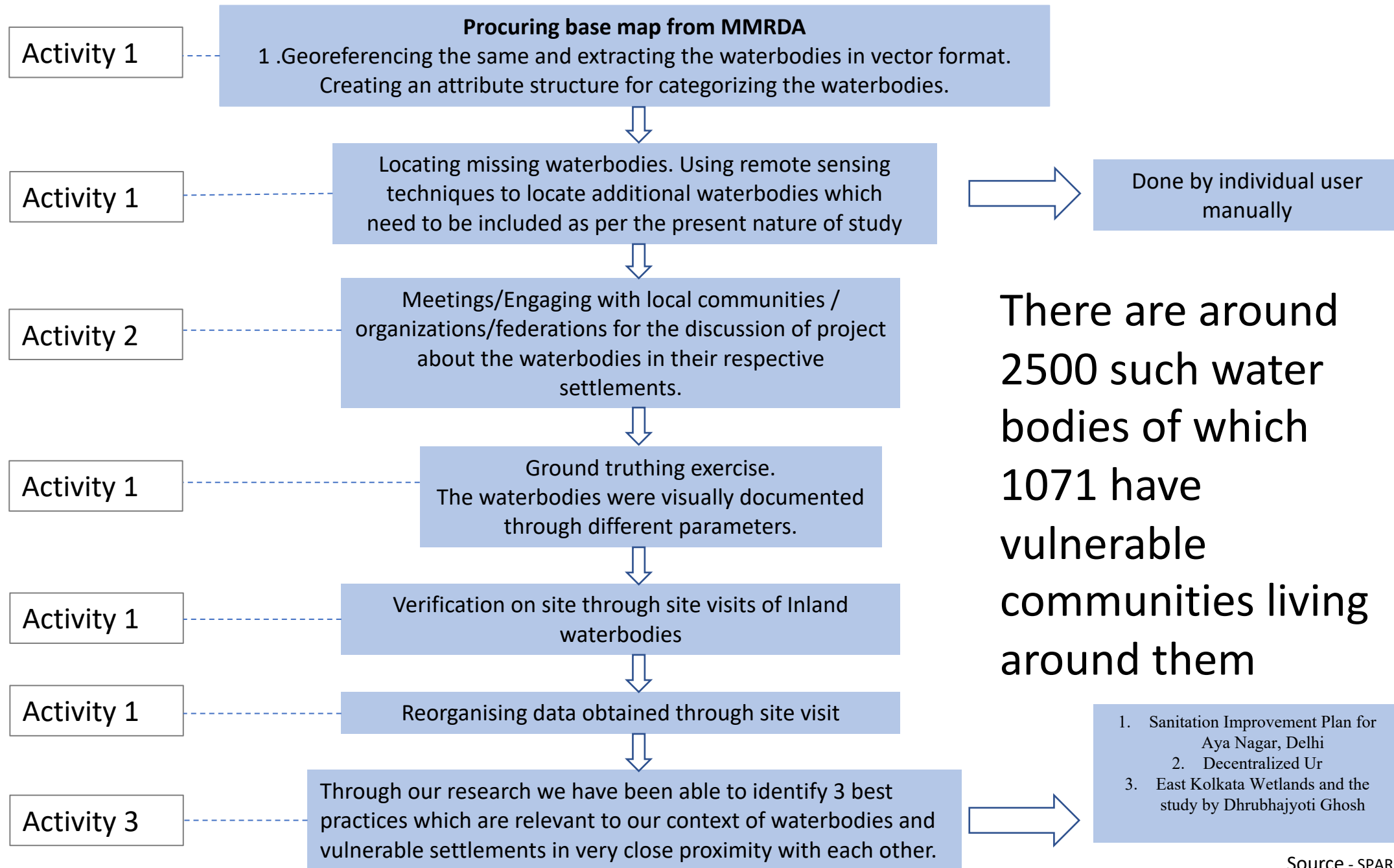
-  Urbanizable Zone
-  Industrial Zone
-  Forest Zone
-  Green Zone



This project serves to:

- a. Use technology data and evidence gathering with people whose lives will be impacted if they don't protect their water bodies as it is linked to their lives and livelihoods
- b. By undertaking this with communities it also seeks to explore nature based solutions that maintain the water bodies that also maintain the green lungs for the metro region.
- c. Facilitate a dialogue with State institutions to explore the strategies solutions and investments needed to improve the people lives and also to nurture these water bodies

Methodology (refer to Simplified Reporting Format Annex B2)



Meetings With Communities

Location – Nagle Pada, Kaman, Vasai

(Activity 2)





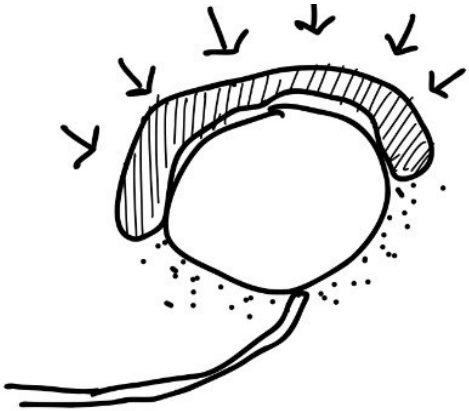
Meeting with Federation

Location -
Bangali, Vasai
West

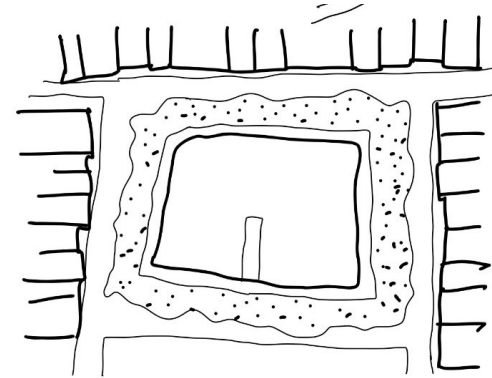
(Activity 2)



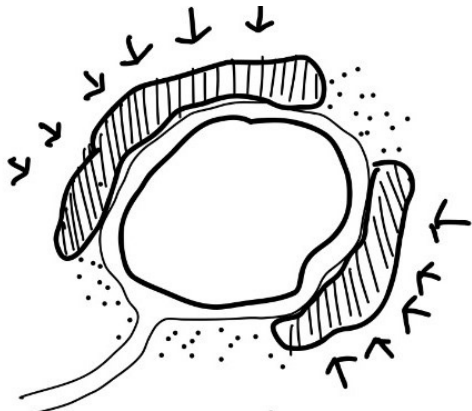
Typologies observed on site



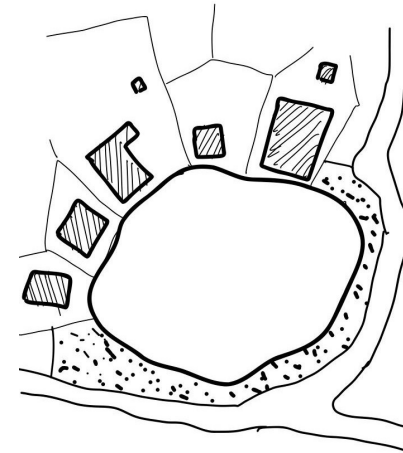
Type 1: Vulnerable settlement touching the soft edge of waterbody



Type 3 : Waterbody having a hard edge and landscaped public space around it and is separated from the settlement by a road



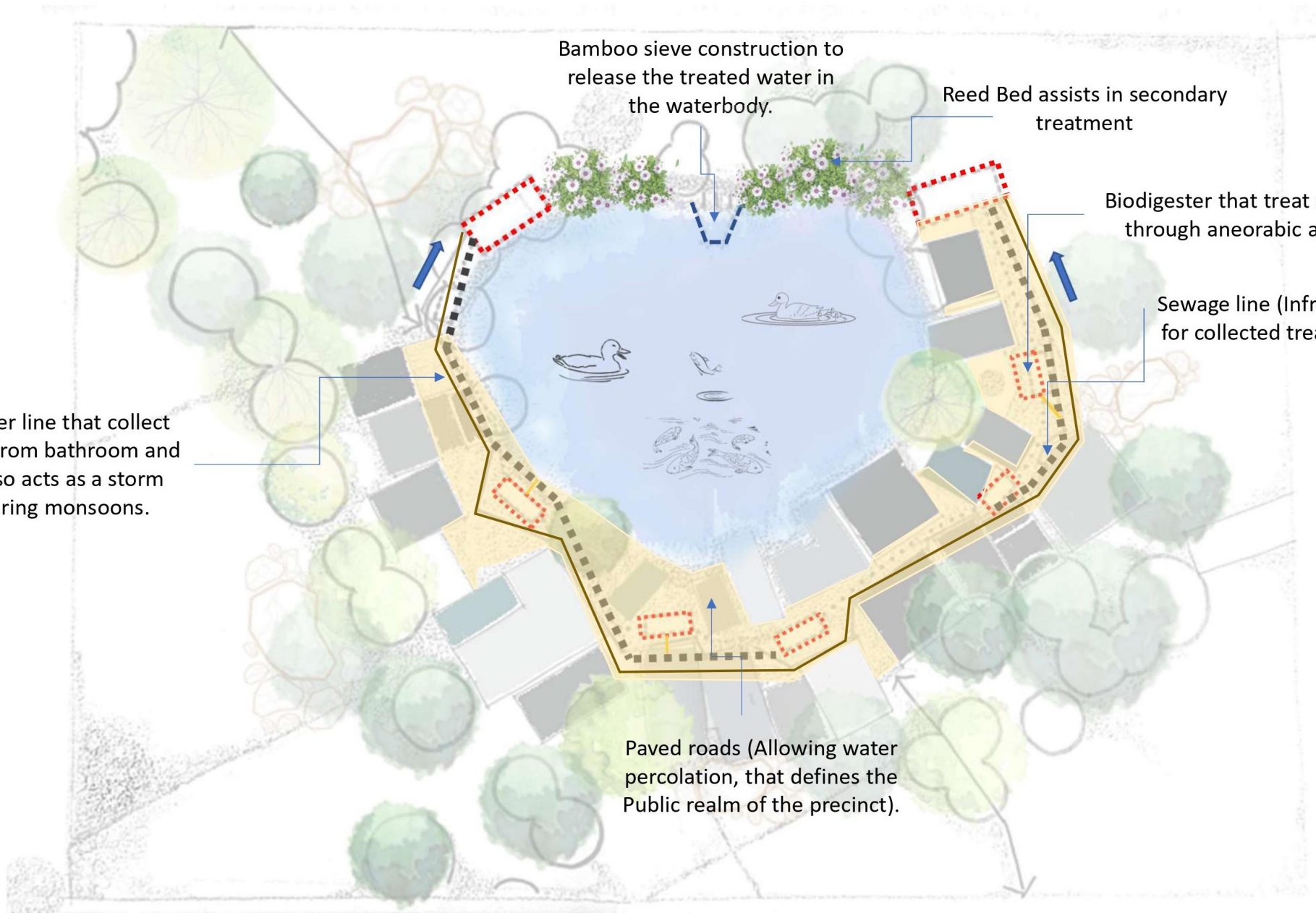
Type 2: Settlement separated from the hard/soft edge of the waterbody by a road/pathway/public space



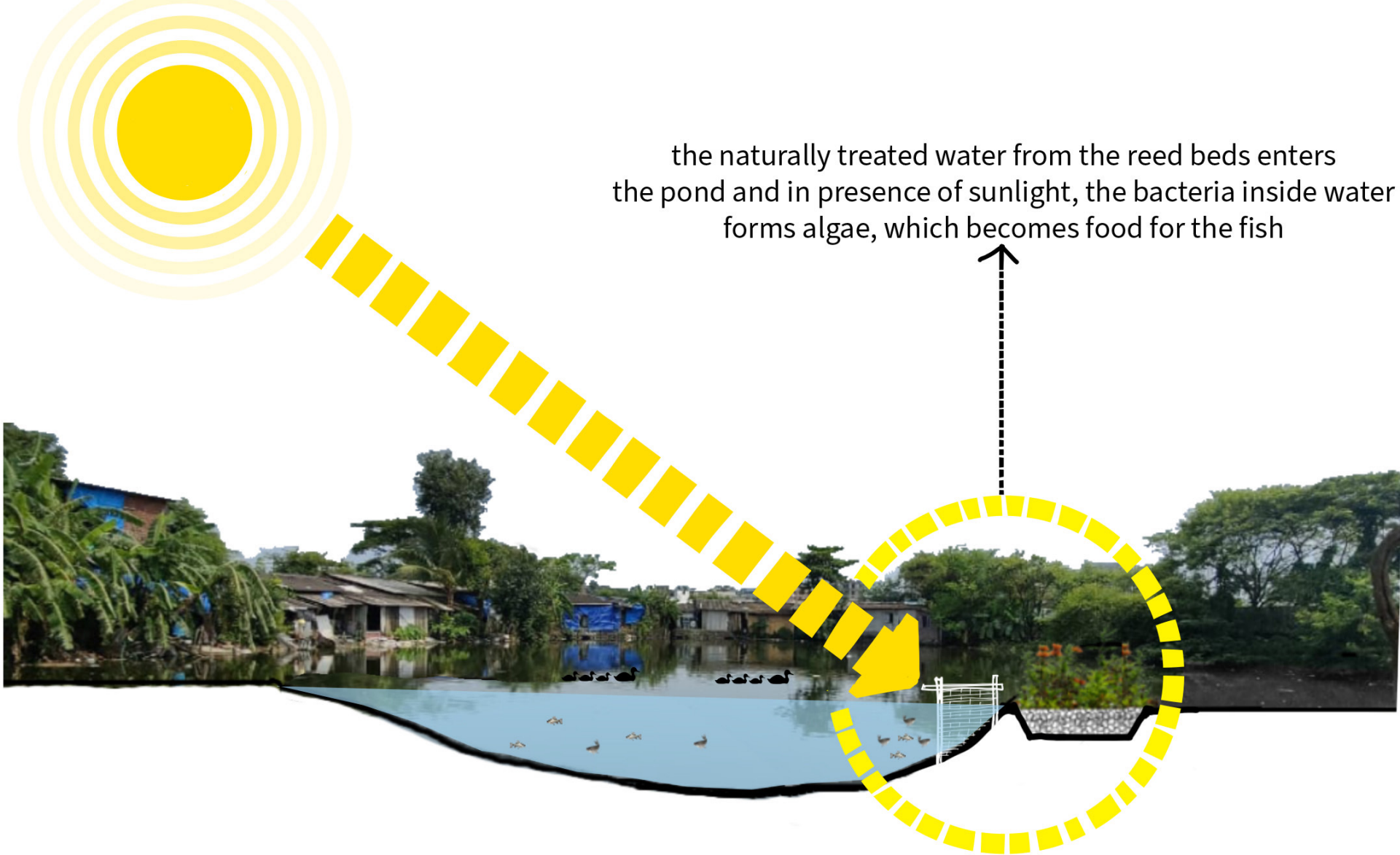
Type 4 : Private bungalow plots abutting the waterbody and either road or landscaped area around it.

The Schematic Proposal for one of the pilot project for inland waterbodies with adjoining settlement

Waste water line that collect grey water from bathroom and kitchen also acts as a storm water during monsoons.



A section showing the reedbed that help in the secondary treatment of water



the naturally treated water from the reed beds enters the pond and in presence of sunlight, the bacteria inside water forms algae, which becomes food for the fish

