

National Adaptation Plan Process MALAWI



POPULATION:
16.4 MILLION



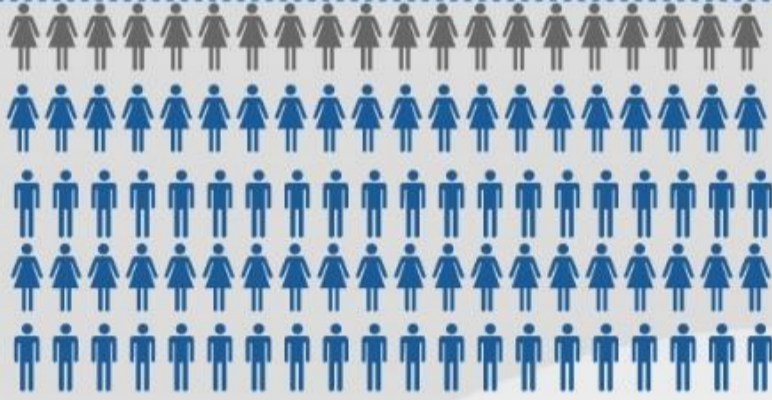
ANNUAL LOSS IN MAIZE PRODUCTION
DUE TO DROUGHTS
4.6%



HUMAN DEVELOPMENT INDEX
RANK
187 (187 COUNTRIES)



ESTIMATED ANNUAL TEMPERATURE
RISE BY 2060
BETWEEN 1.6 AND 3°C

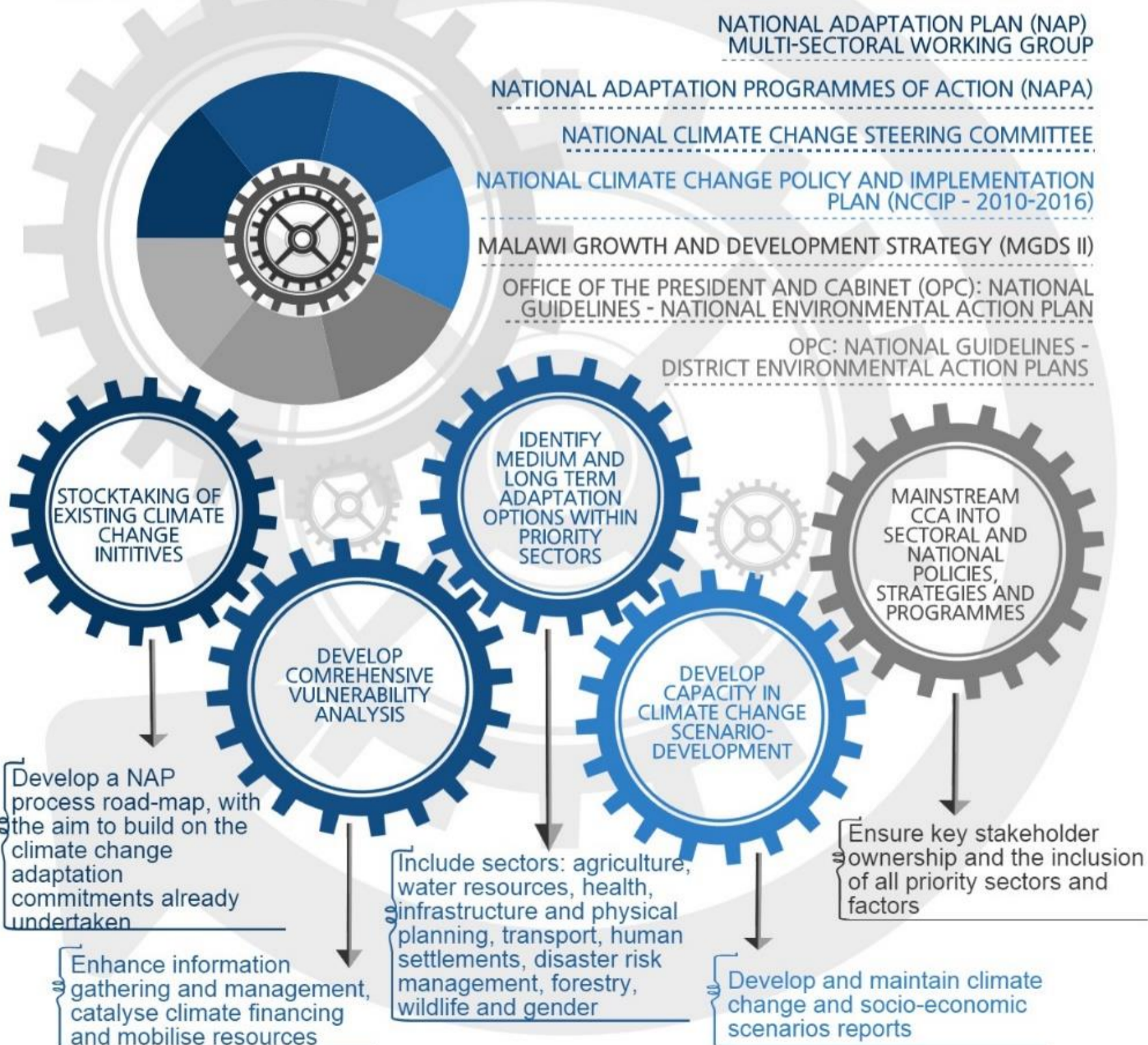


POPULATION OF MALAWI WHO ARE
CHRONICALLY FOOD INSECURE - 2015

20%

?? MILLION PEOPLE

ENTRY POINTS AND COMPONENTS FOR THE NAP PROCESS IN MALAWI



SUPPORTING ADAPTATION INITIATIVES OF THE GOVERNMENT OF MALAWI

" We are experiencing more frequent and severe floods and droughts in Malawi. To protect people and livelihoods for the long term, we must develop our climate change National Adaptation Plan.
Dr. Yanira Mtupanyama
Principal Secretary, Environment and Climate Change

" The NAP process in Malawi is a great milestone in identifying and addressing medium and long term adaptation needs as stipulated in the Malawi Growth and Development Strategy.
XXXX XXXX XXXX
Government of Malawi



Government of Malawi

NAP-GSP
NATIONAL ADAPTATION PLAN GLOBAL SUPPORT PROGRAMME

A joint UNDP/UNEP programme

www.undp-alm.org/projects/naps-ldcs

