



MONITOREO Y EVALUACIÓN DE ADAPTACIÓN Y PÉRDIDAS Y DAÑOS

Background

Panama ratified the Paris Agreement through Law No. 40 of September 12, 2016, making effective its commitment to climate change through its Nationally Determined Contribution (NDC).

2016

The PNTC was created by Executive Decree No. 100 of October 20 as the official mechanism for the management, monitoring, reporting and registration of national initiatives that move the country towards sustainable development.

2020

Panama presented its updated NDC, which includes among its commitments the PNTC.

The M&E System was made official for Panama by Executive Decree No. 135 (04-30-2021).

2021

Official Launching of the 21 Climate Change Adaptation Indicators of the M&E System in Panama

Official Launch of the 16 Loss and Damage Indicators of the M&E System in Panama

2022

Strengthening the M&E System through the inclusion of Loss and Damage Indicators.

Launching of the M&E Module at PNTC

Strengthening the M&E System through the inclusion of Climate Displacement in Panama.

Strengthening of the M&E System and validation of Loss and Damage indicators.

2023

Presentation of the M&E Module - PNTC Loss and Damage sub-module

Annual Report of the M&E System (under construction).

Background



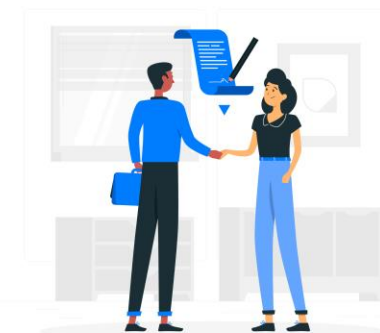
The M&E System was built on the basis of a **literature review** of various entities with experience in reporting climate change indicators.



The **international indicators** were adapted to create a national system to measure the progress of adaptation in our country.

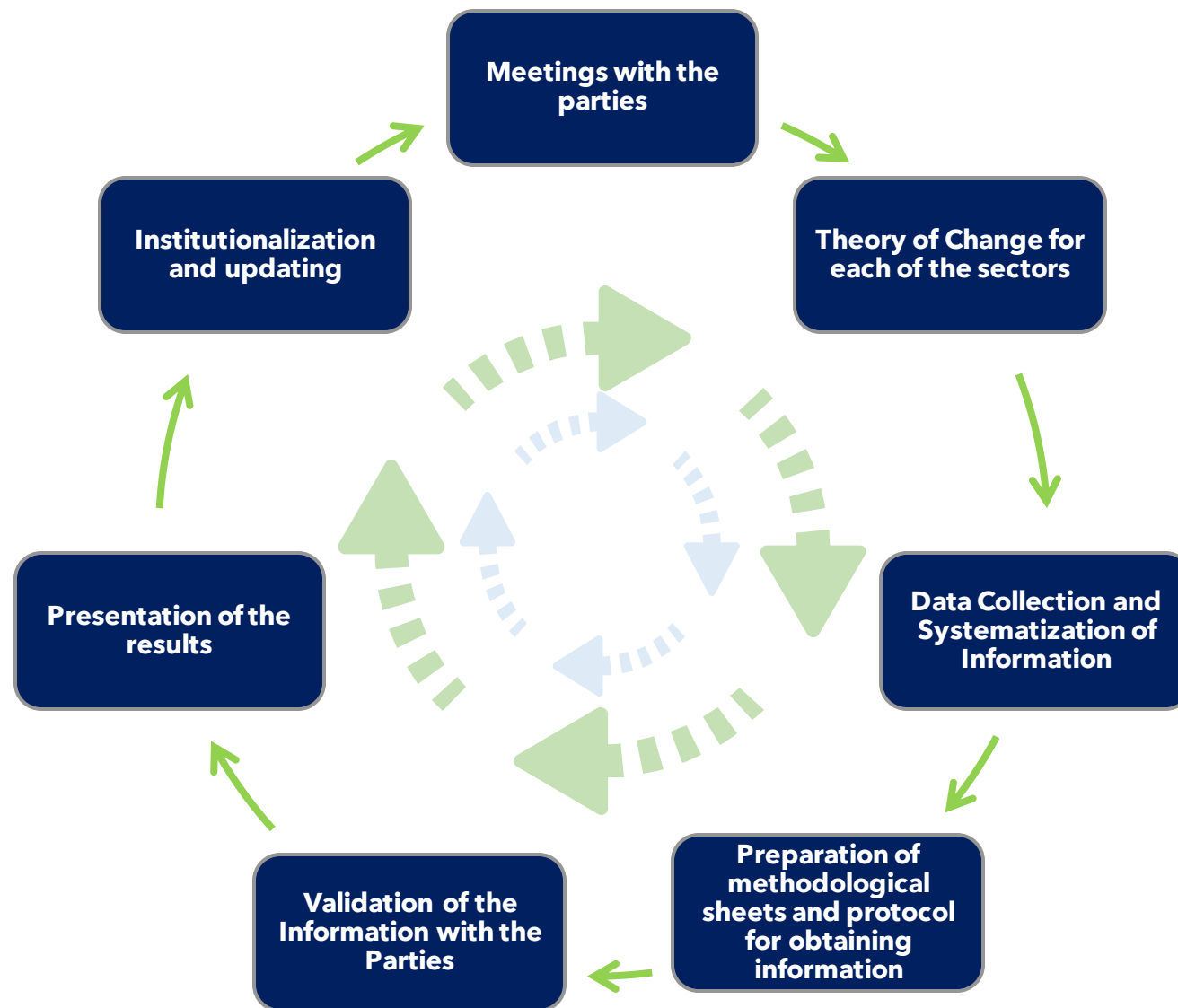


Working teams were created for each indicator and consultations were held with governmental and non-governmental organizations to compile existing information and to collect and validate the methodological sheets.



A process for continuing to operate the M&E system has already been established, and **institutional agreements** for systematizing the information were suggested.

Process of construction of the Panama's M&E System



Monitoring and Evaluation Systems in Panama



FASE I: MONITORING AND EVALUATION (M&E) SYSTEM FOR ADAPTATION

FASE II: LOSS AND DAMAGE MONITORING AND EVALUATION (M&E) SYSTEM

Project Title

Monitoring and Evaluation (M&E) System for Adaptation

Strengthening the Monitoring and Evaluation (M&E) System for Adaptation

Executing Entity

Ministry of Environment

Ministry of Environment

Implementing Entity

Fundación Natura, with financial resources from the Adaptation Fund

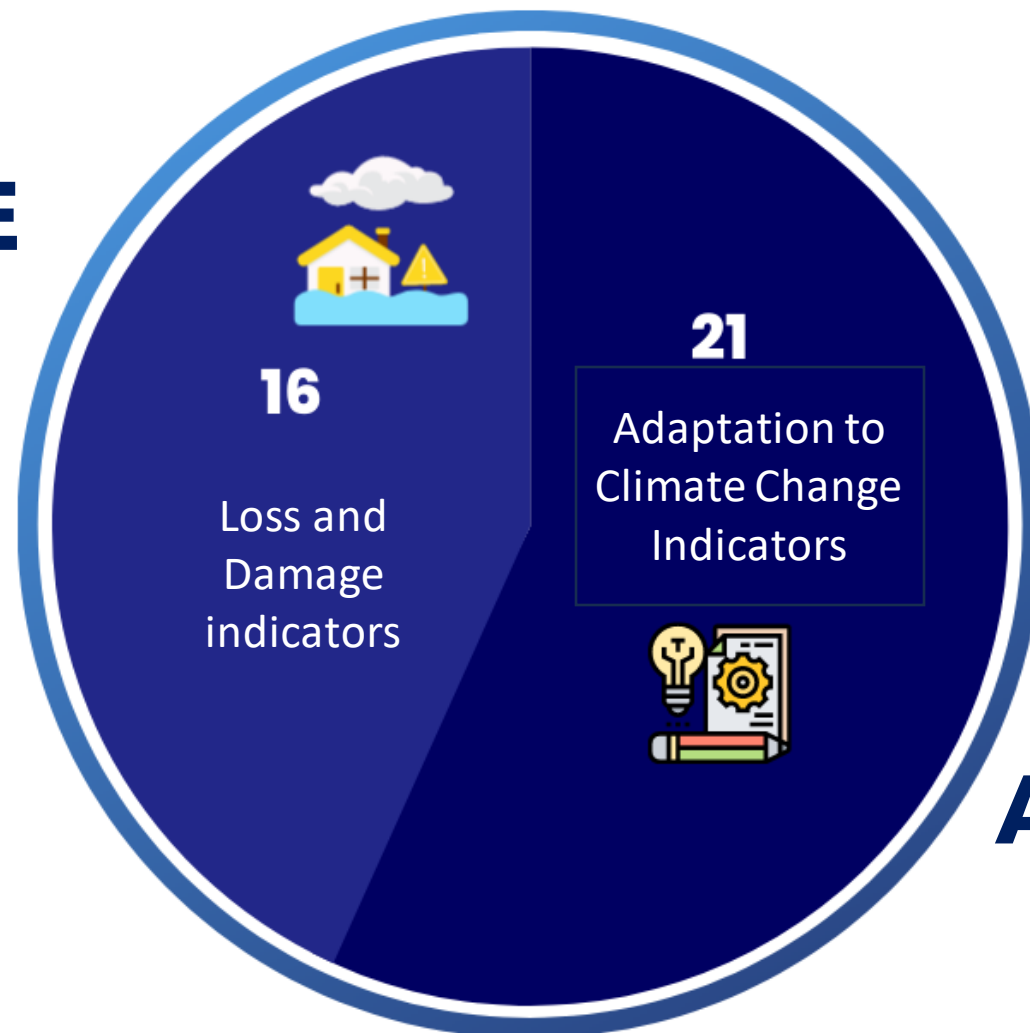
Fundación Natura, with financial resources from the Initiative for Climate Action Transparency (ICAT)

Implementation Period

1 year

1 year

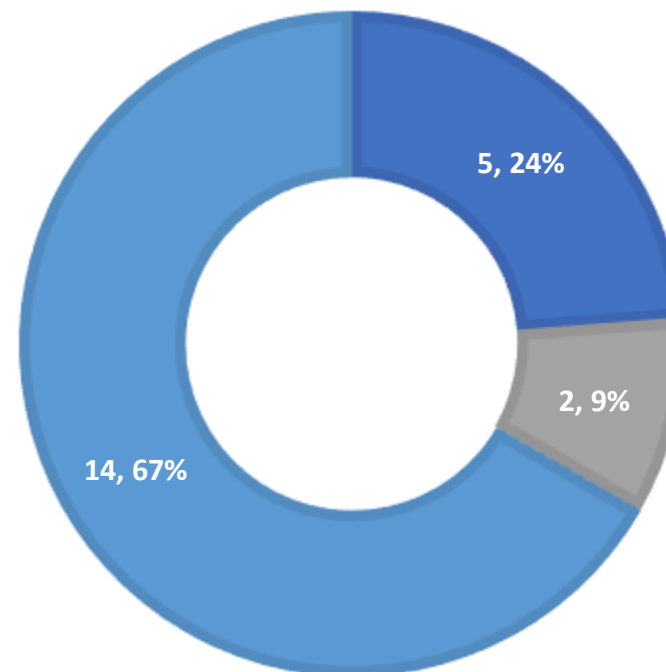
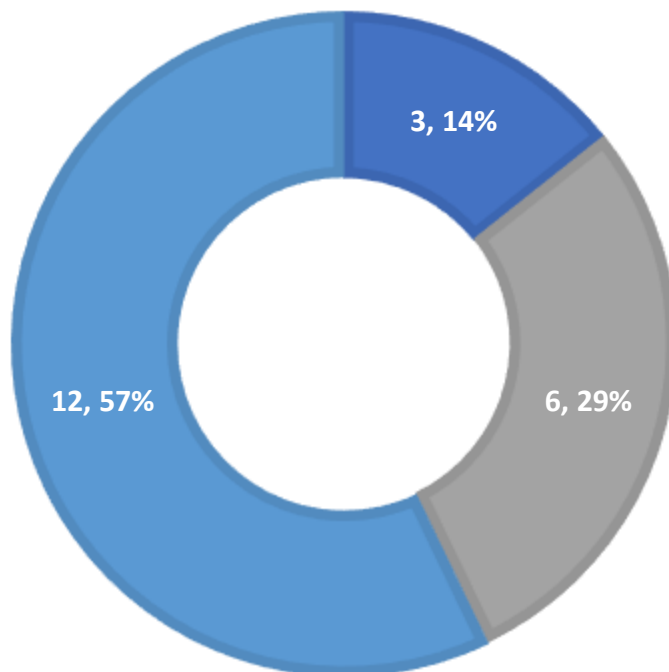
Loss and Damage M&E System



Adaptation M&E System

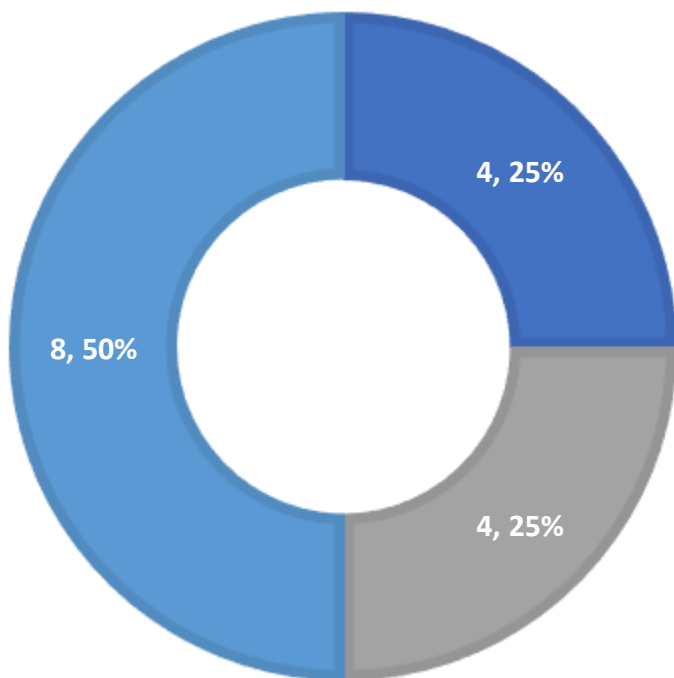
M&E Adaptation System

■ Climate Impacts ■ Adaptation Results ■ Adaptation measures ■ Sensitivity ■ Exposition ■ Adaptive Capacity

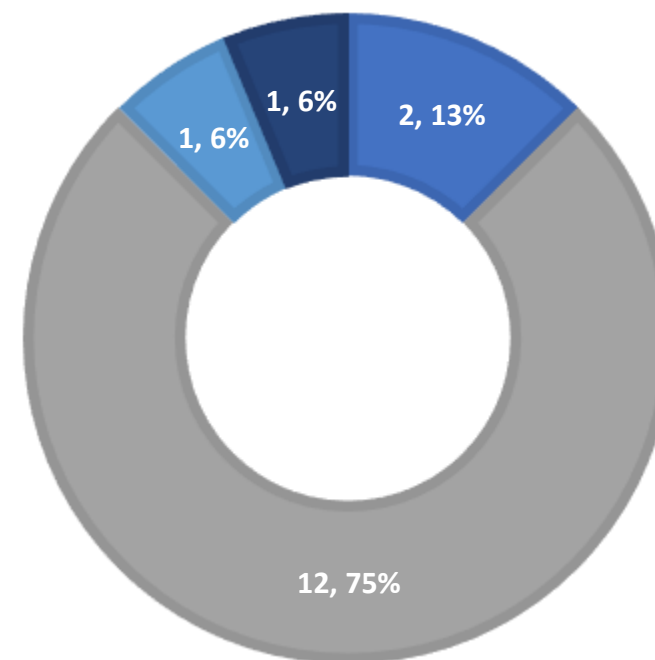


Loss and Damage M&E System

■ Economic Losses ■ Non Economic Losses ■ Management



■ Slow Onset Events (SOE) ■ Extreme Weather Events (EWE)
■ Finance ■ SOE & EWE





Sistema de Monitoreo y Evaluación de la Adaptación



Panama's Climate Transparency Platform

Conoce el M&E

Indicadores

Marco Legal

Descripción

Herramientas

Preguntas frecuentes

Formularios

Indicadores De Adaptación Al Cambio Climático



Beneficiarios con vulnerabilidad al cambio climático, que han recibido apoyo para mejorar sus medios de vida y fuentes de ingreso

Este indicador sirve como una aproximación del número de personas cuya vulnerabilidad a los efectos adversos del cambio climático se reduce mediante la adopción de opciones de medios de vida más resilientes como



Número y valor de los activos físicos que se hicieron más resistentes a la variabilidad y el cambio climático

Muestra la número y valor de los activos físicos resistentes a la variabilidad o cambio climático en proyectos/programas ejecutados o en ejecución de inversiones públicas o privadas.



Instrumentos y modelos de inversión con capacidad de respuesta ante el cambio climático

Número de Instrumentos y modelos de inversión relacionados al clima que se han elaborado y puesto a prueba por las instituciones u organizaciones.

Ficha técnica



Challenges

Information for Decision Making

- Effective estimation of adaptation progress in the country's priority sectors.
- Consistent interpretation of adaptation outcomes and loss and damage

Keeping key stakeholders engaged

- Participation and involvement of key actors for the correct and regular provision of data
- Articulation between the M&E Adaptation System and other national information systems or platforms.

Technical and financial resources

- Continuously strengthen the team's capabilities in the prioritized topics
- Permanent technical staff to ensure the continuity of the system.

Lessons learned

Validation of indicators is a fundamental process to improve data evaluation.

The success of an indicator depends on its functionality and not so much on the need to monitor and evaluate a national reality.

The involvement of the regional offices of the institutions is important to achieve national objectives.

Inter-institutional cooperation is necessary for the sustainability of indicators over time.

Collaboration through institutional arrangements is essential.

The feedback provided by the stakeholders is important for the strengthening of the team and the indicators

Future actions of the Adaptation and Loss and Damage Monitoring and Evaluation System

M&E System Functionality
Assessment

Second phase of
cooperation with ICAT

Climate displaced people

Developing a Climate
Displaced Persons Strategy

Development of a Climate
Displaced Persons Section
in the PNTC

Capacity building

Key Actors with
Participation of Universities

Strengthening the M&E
Module



**¡GRACIAS
POR SU
ATENCIÓN!**

Katherine Martinez

Climate Change Analyst

✉ kmartinez@miambiente.gob.pa

Climate Change Directorate

☎ (507) 500-0802 ext. 6283

**THANK YOU
FOR YOUR
ATTENTION!**